



GREENWICH

English College

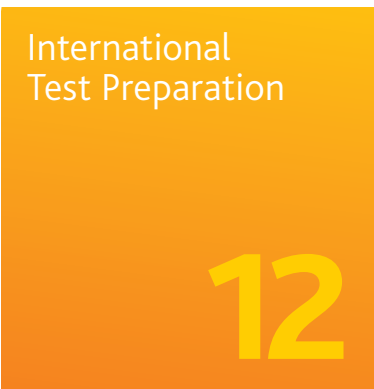
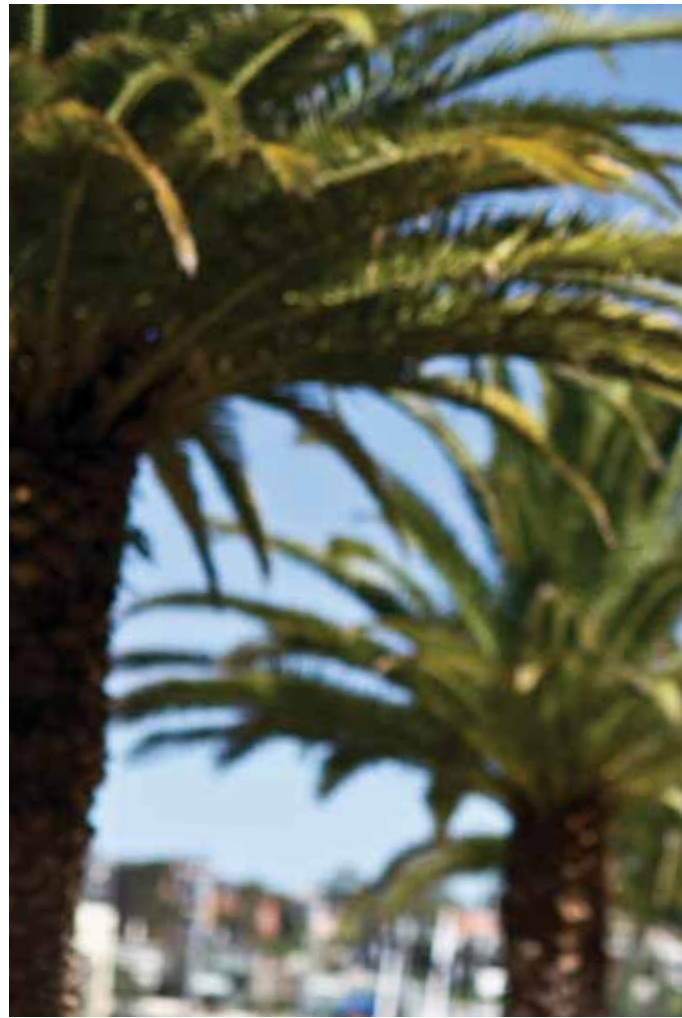
EXPLORE. EXPERIENCE. EXPAND.





English Language
Courses

08



International
Test Preparation

12



English for
Special Purposes

18



Contents

02. About Greenwich English College

04. Living in Sydney

06. Study Pathways

08. ENGLISH LANGUAGE COURSES

**10. General English
Academic English Preparation**

12. INTERNATIONAL TEST PREPARATION

14. Cambridge Exam Preparation
Cambridge Preliminary English Test (PET)
Cambridge First Certificate in English (FCE)
Cambridge Certificate in Advanced English (CAE)

16. IELTS Preparation

18. ENGLISH FOR SPECIAL PURPOSES

21. English for Academic Purposes

22. English for Business

24. Pronunciation in Context

25. English for TECSOL

26. Ready for Work

27. Accreditations & Associations

28. No two dreams are the same

We would like to thank all our students and staff who participated in this publication, with special mention to:

Alejandro, Cecilia, Cho Rong, Claudia, Clement, Dragon, Eriko, Fran, Franz, Hugo, Jihyun, Jiseon, Marion, Mariona, Martina, Melissa, Monica, Nantinee, Natsuki, Petra, Petra S, Pilar, Rocio, Roxana, Samson, Sara, Shutimun, Sonia, Taka, Thuy Le, Yao, and Yoko.



About Greenwich English College

“Greenwich English College has given me the opportunity to broaden my horizons. Here I developed my written and spoken English for my future professional plans. It was definitely the professionalism and commitment of the teachers which allowed me to pursue English language up to the teaching level, a goal beyond my initial objectives.”

SONIA BRAZAO,
PORTUGAL.

Sydney’s Greenwich English College is ready to help you to make the most of your English study. We offer excellent and innovative teaching, quality student services, individual career and study planning and great facilities across two modern campuses in Australia’s most exciting city.

WHY STUDY WITH US?

- We have one of the best ranges of first-rate English courses in Sydney - for both day and evening classes.
- Excellent and innovative teaching methods, quality student services, individual career and study planning.
- First class facilities - a new campus in the heart of Sydney’s CBD.
- Great nationality mix - we teach students from more than 80 countries around the world, speaking more than 30 languages. Average of 35% Asian, 30% European, 25% Latin American, 10% other regions.
- Each student has different goals for studying English language, academic, business, work and travel; our flexible approach of weekly testing and easy transfer between courses gives students the best possible chance to progress as quickly as they can.
- Greenwich English College was founded by teachers and has grown by focusing on people - recruiting teachers passionate about language and helping student needs with specialised courses.

Contact us or come and talk to us and see the difference Greenwich English College can make for your English study needs.

STUDENT COUNSELLING - YOU’RE NOT ALONE

Greenwich English College invests significant time in providing frequent, scheduled time slots to help students consider the best kind of study for them. We work with you to consider your chosen pathway, the components of your course, your progress and your emotional, physical and educational health.

Our one-on-one student counselling model sets us apart from other schools.

Learn more about Greenwich English College:

greenwichcollege.com.au



Living in Sydney

"Sydney is like a big pot full of people from different places and languages. It's great to be able to meet other people, share our thoughts and tell each other about our culture. It's a very interesting thing! And if I want to go somewhere with my friends after studying all day, it's so easy, because the College is right in the middle of the city but close to the beach as well!"

NATSUKI MIYAKE,
JAPAN.

Greenwich English College campuses are located in Sydney's CBD, and are a good reflection of Sydney itself, multicultural, cosmopolitan and vibrant.

Being a student of Greenwich English College allows you to fully experience the diversity and friendliness of the Australian culture. You will enjoy your study, meet locals and people of other cultures and make lifelong friendships, find a part-time job and learn to communicate confidently, to make the most of your overseas study experience.

SYDNEY LIFESTYLE

Sydney is home to about 4.5 million people, more than 50 white, sandy beaches, and is surrounded by national parkland and World Heritage sites. Sydney offers landmarks and cultural experiences as unique as the iconic Australian wildlife we've all come to identify with this incredible country.

What better place to enrich your English, or to develop work, business and study skills that will be valuable throughout your life, regardless of where you live.

CAREER PATHWAYS

Sydney is also Australia's business capital and offers well-respected choices in higher education, vocational training and clear career pathways.

LEARN AND ENJOY AUSTRALIA

Greenwich English College knows that people learn best when they are settled, motivated and secure. We work hard to help you balance your studies, offering social events, sports and excursions, enabling access to the best Australia has to offer. It's all very good for your language!

Learn more about living in Sydney:

greenwichcollege.com.au/living-in-australia/



Study Pathways

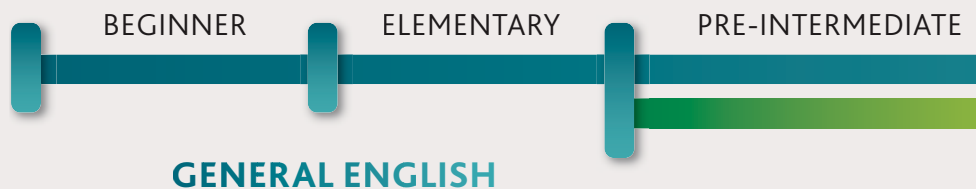
Greenwich English College is highly regarded as a pathway provider for universities and colleges. Studying one of our English pathway programs means you may not have to take the official IELTS exam to gain entry into a study partner program. Instead, you build your proficiency in one of our pathway classes until you reach the level required. Learn more about Greenwich English College pathways: greenwichcollege.com.au/pathways

“Thanks to the helpfulness and care of the staff, in only 6 weeks of IELTS Preparation Classes I was able to improve my IELTS score by 1.5 marks overall: from 5.5 to 7.0 and to win a Scholarship at Macquarie University! I’ve now graduated and have come back to Greenwich to further improve my English skills.”

ELISA RAZZOLI,
ITALY.

COURSES TO FURTHER YOUR CAREER

We offer a variety of study options and our teachers and counsellors are experienced in helping students to understand what is available and what programs are most suited to their specific needs. As students’ progress we offer an easy and flexible transition to upgraded programs with no extra charge. Regular course counselling is also a valuable service guiding students on how to get the maximum benefit from their time at Greenwich English College.



CAREER OPPORTUNITIES

We have a range of courses designed to enhance your career opportunities:

ENGLISH FOR ACADEMIC PURPOSES

Prepare for direct entry and the study skills needed at universities and colleges.

CAMBRIDGE EXAM PREPARATION PET / FCE / CAE

Preferred by employers as a true test of English.

ENGLISH FOR BUSINESS

A smart investment for the business minded. Take the optional Cambridge BULATS exam.

ENGLISH FOR TECSOL

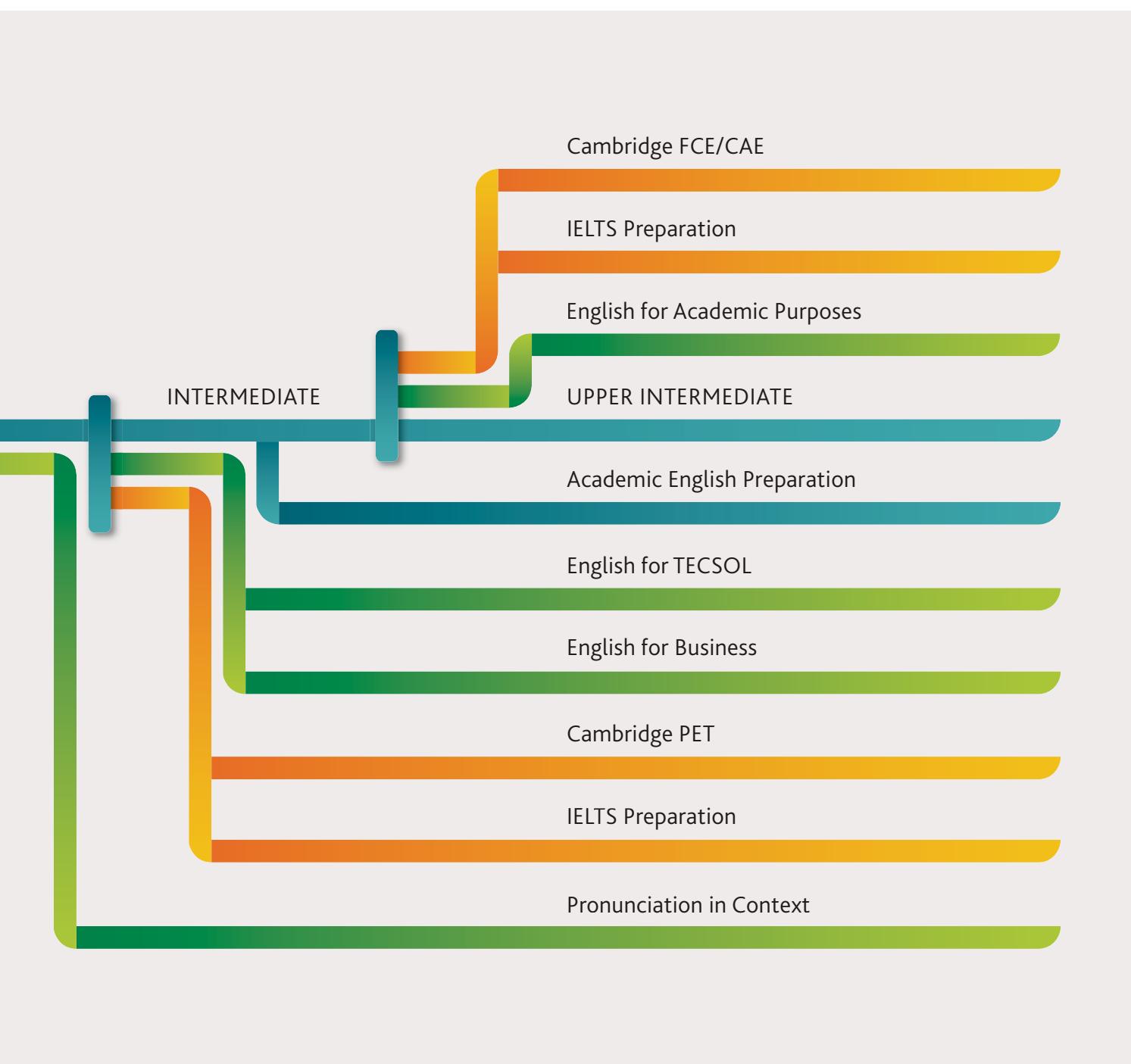
Learn skills to teach English to children.

IELTS PREPARATION

For career, university, college and migration.

PATHWAY PARTNERS

We have special pathways to some of Australia's top institutions, such as:



ENGLISH LANGUAGE COURSES

General English
Academic English Preparation (AEP)

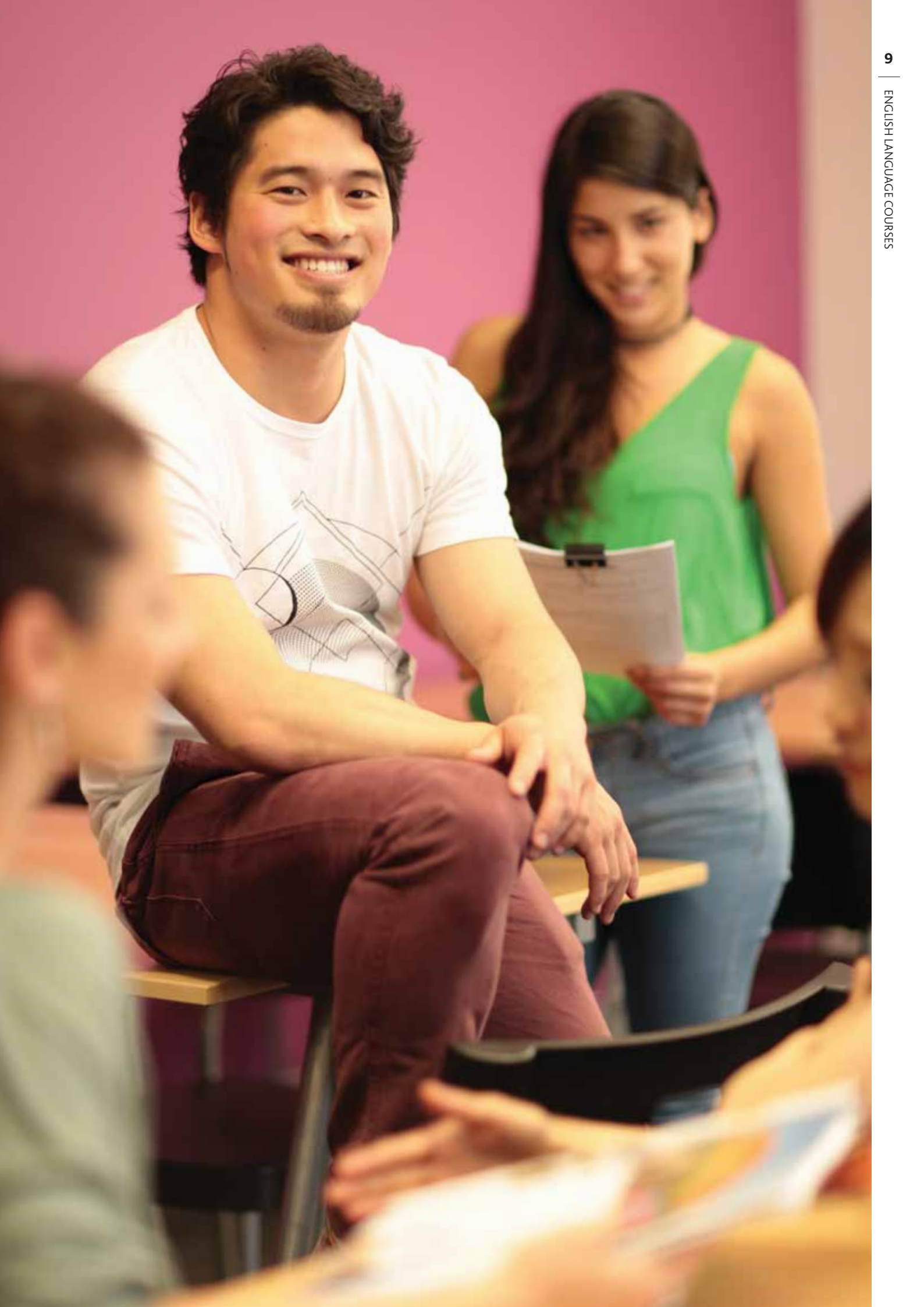
“I really loved this warm and friendly atmosphere. We are all from different parts of the world, speaking English with other students - that’s the only language you have in common.”

YAO KAZATO / JAPAN.



THE RIGHT START

English study courses for every kind of student, with every kind of plan for the future. Make English language work for you with the course that suits you best.



General English

Course CRICOS Code: 059969M

1 - 50 WEEKS (DAY & EVENING)

Through General English you can develop core English language skills, studying reading, writing, speaking and listening and then applying what you have learned in practical, interactive sessions to suit your level. This course is perfect for students from Beginner to Upper Intermediate levels.

Courses run from Monday to Thursday with electives on Friday. Study from 1-50 weeks depending on your circumstances.

WHY STUDY GENERAL ENGLISH?

- Study foundation English skills to prepare you for further programs.
- Weekly testing and counselling for faster progression.
- Friday electives such as grammar and conversation, fluency, movie club, English for work and excursions around Sydney that provide other ways of learning English.
- 1-hour every week of nationality specific pronunciation classes.
- Free conversation classes Monday - Wednesday "Speaking Club" and extra tutorial class H.E.L.P Club on Thursdays.

GENERAL ENGLISH SAMPLE TIMETABLE

DAY	EVENING	MONDAY	TUESDAY	WEDNESDAY	THURSDAY	FRIDAY
09:00 - 10:20	16:30 - 17:30	English Grammar	English Grammar	English Grammar	Use of English	ELECTIVES Grammar & Conversation/ Excursion/Movie Club/Fluency/ English for Work/ English for Business Newsletter
10:30 - 11:50	17:30 - 18:30	Language Rules	Sentence Structure	Syntax	Weekly Test	
12:30 - 13:40	19:00 - 20:00	Creative Writing	Vocabulary Builder	Pronunciation	Reading & Listening	
13:50 - 15:00	20:00 - 21:00	Speaking	Listening & Speaking	Survival English	Creative Writing	
15:00 - 16:00	15:00 - 16:00	Speaking Club	Speaking Club	Speaking Club	H.E.L.P Club	
						-

"The opportunity Greenwich English College gave me was exactly what I needed to really challenge my English. We test every week and also have personalised feedback from our teacher. Every student has equal chance to move up to the next level any week. This also means we have more chances to make more friends. It's the best start to my Australian life."

SHUTIMUN KULTHANAPAT,
THAILAND.

Academic English Preparation (AEP)

Course CRICOS Code: 059969M

10 WEEK PROGRAM (DAY)

AEP is an extension program for General English students who want a more intensive program. AEP is also a great foundation for Greenwich English College academic programs such as IELTS, Cambridge and EAP.

- Focus on more reading, writing and presentation skills than regular classes.
- Prepares you to master a deeper understanding and fluency in English.
- Provides a pathway to vocational colleges.
- Suits Intermediate students (IELTS 5.0) or Greenwich Entry Test (at the College or online).

Learn more about Greenwich English College courses:

greenwichcollege.com.au/course-category/english-language/



INTERNATIONAL TEST PREPARATION

Cambridge Preliminary English Test (*PET*)
Cambridge First Certificate in English (*FCE*)
Cambridge Certificate in Advanced English (*CAE*)
International English Language Testing System (*IELTS*)

“Before Cambridge I could communicate, but with limitations. Now I have a better understanding of how to use English and can confidently express myself in the way I always wanted.”

MONICA RAMIREZ GARCIA / MEXICO.



INTERNATIONAL STANDARDS

Greenwich English College is equipped to prepare you for the major international testing standards to help you to translate your study into global results.



Cambridge Exam Preparation

Course CRICOS Code: 059969M

10 - 12 WEEK PROGRAM (DAY & EVENING)

Join our elite group of graduates. Cambridge Exam Preparation courses cover the main language areas for students of different levels. Using material from real life, these courses equip you for the Cambridge test but also for real world situations such as work and social interactions.

Whatever your future plans, a Cambridge qualification is accepted around the world as a well-respected standard of ability in English.

"I arrived in Australia unable to speak a word of English. After the completion of the Cambridge course I now feel confident in beginning a professional career. The great learning environment and teaching expertise offered made it an easy choice. I would recommend Greenwich English College for anyone."

DAVID MASCARENHAS,
BRAZIL.

WHY STUDY CAMBRIDGE?

- Greenwich English College is an authorised Cambridge examination centre so you can take the test in a familiar location.
- Weekly practice tests and one-on-one student counselling show you areas for extra work and improvement to help you achieve the best possible results.
- Dedicated and closed class groups aiming for the same goal.
- Receive internationally recognized qualifications awarded for life.
- Greenwich offers 3 levels of Cambridge Exam Preparation classes.

CAMBRIDGE PRELIMINARY ENGLISH TEST (PET)

Suits Intermediate students (IELTS 5.0) or Greenwich Entry Test (at the College or online).

CAMBRIDGE FIRST CERTIFICATE IN ENGLISH (FCE)

Suits Upper Intermediate students (IELTS 6.0) or Greenwich Entry Test (at the College or online).

CAMBRIDGE CERTIFICATE IN ADVANCED ENGLISH (CAE)

Suits Advanced students (IELTS 7.0) or Greenwich Entry Test (at the College or online).

CAMBRIDGE EXAM PREPARATION SAMPLE TIMETABLE

DAY	EVENING	MONDAY	TUESDAY	WEDNESDAY	THURSDAY	FRIDAY
09:00 - 10:30	16:30 - 17:30	Test Review	Short Presentation	Short Presentation	Short Presentation	Practice Test
10:40 - 12:30	17:30 - 18:30	Use of English Grammar	Cambridge Speaking	Cambridge Reading	Vocabulary Builder	Practice Test
13:10 - 13:55	19:00 - 20:00	Cambridge Reading	Cambridge Writing	Cambridge Listening	Cambridge Writing	Practice Test
14:05 - 15:00	20:00 - 21:00	Cambridge Listening	In-Class Writing	Cambridge Speaking	In-Class Writing	Practice Test

Learn more about Greenwich English College courses:

greenwichcollege.com.au/course-category/english-language/



IELTS Preparation

Course CRICOS Code: 059969M

1 - 28 WEEK PROGRAM (DAY & EVENING)

"I had sat the IELTS test six times, but could not reach the target score of 7. I had been studying so hard and so stopped believing in myself. Then I enrolled into the IELTS course at Greenwich English College. After two weeks here I got my confidence back, improved my writing skills remarkably and successfully passed the test with scores of 8,7,7,7. Thank you so much!"

PETRA STRONCEROVA,
SLOVAKIA.

IELTS (International English Language Testing System) is the standard test used for university entry in Australia, New Zealand, Canada, Britain and much of the US. An IELTS score is often a requirement of the Department of Immigration and Citizenship (DIAC) of Australia for migration purposes.

Greenwich's IELTS Preparation courses can help you to achieve a higher score in the official IELTS test and gain entry into the pathway of your choice, while developing your overall English skills.

Greenwich English College uses its customized IELTS workbook – showing high success rates with students achieving their desired IELTS level.

WHY STUDY IELTS PREPARATION?

- Classes start every week, day and evening.
- Two levels of classes; **Foundation** and **Advanced** - study with classmates at the appropriate level.
- Develop exam skills in academic writing and listening, grammar, fluency and vocabulary.
- Greenwich provides exam strategies and organisational techniques giving students the best chance to reach their goals.
- Greenwich English College is an authorised IELTS pre-test centre.
- Weekly practice with IELTS tests in real test conditions. Greenwich has a large number of IELTS examiners on staff giving students a genuine preparation.
- **Foundation** - Suits Intermediate students (IELTS 5.0) and **Advanced** - Suits Upper Intermediate students (IELTS 6.0) or Greenwich Entry Test (at the College or online).

IELTS PREPARATION SAMPLE TIMETABLE

DAY	EVENING	MONDAY	TUESDAY	WEDNESDAY	THURSDAY	FRIDAY
09:00 - 10:30	16:30 - 17:30	Test Review	Reading - IELTS	Structure & Skills	Listening - News	Practice Test
10:40 - 12:30	17:30 - 18:30	Jigsaw Reading	Listening - IELTS	Listening - Dictogloss	IELTS Speaking Skills	Practice Test
13:10 - 13:55	19:00 - 20:00	Writing Task	Grammar for IELTS	Vocabulary - IELTS	Writing Skills	Practice Test
14:05 - 15:00	20:00 - 21:00	Speaking Task	Speaking	Reading - IELTS	Writing Practice	Practice Test

Learn more about Greenwich English College courses:

greenwichcollege.com.au/course-category/english-language/



ENGLISH FOR SPECIAL PURPOSES

English for Academic Purposes (*EAP*)

English for Business

Pronunciation in Context

English for TECSOL

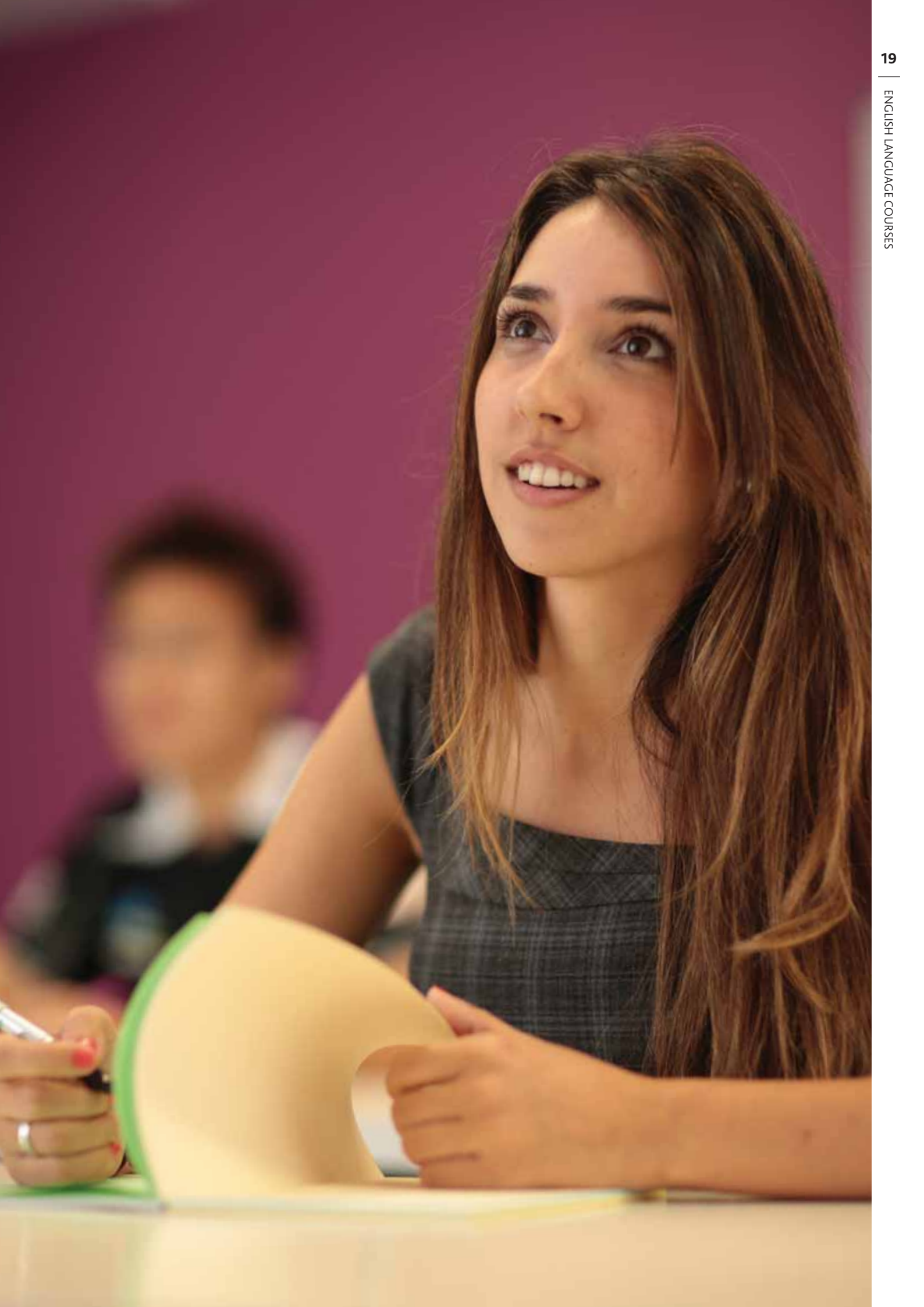
Ready for Work (*Provide Responsible Service of Alcohol*)

“I always wanted to work in an English speaking country. English for Business has given me the practical skills and confidence to find work internationally.”

ROCIO MARTIN GONZALES / SPAIN.

CHOOSE YOUR FUTURE

No two dreams are the same and there are many reasons to focus on English study. Greenwich English College has catered for them all.





English for Academic Purposes (EAP)

Course CRICOS Code: 059969M

Certificate IV in Academic English - Course Code: 52420WA | Course CRICOS Code: TBA

10 - 12 WEEK PROGRAM (DAY & EVENING)

EAP provides excellent preparation for university and other higher education institutions where successful students need to understand and communicate efficiently. Greenwich English College aims to prepare students not only for entry but to enjoy their study at an Australian institution.

Even if higher education is not the chosen path, EAP is a fantastic course to lift students to a higher level of English in formal report writing and presentations.

WHY STUDY EAP?

- Direct entry to 20+ universities, colleges and TAFE NSW - undergraduate and masters level courses.
- Focuses on the vital presentation, writing and referencing skills you will need to excel at university or college.
- Group study and university-style learning contexts.
- Weekly testing and practice to monitor progress.
- Suits Upper Intermediate students (IELTS 6.0) or Greenwich Entry Test (at the College or online).

“At the beginning of the EAP course I felt so nervous, learning so much new language about the demands of academic study: note-taking, presenting, writing skills and tests each week. At the end of the course I felt great. I just received my certificate and there’s a letter of offer on its way from an Australian university to study a Bachelor of Accounting.”

THUY LE NGUYEN,
VIETNAM.

ENGLISH FOR ACADEMIC PURPOSES SAMPLE TIMETABLE

DAY	EVENING	MONDAY	TUESDAY	WEDNESDAY	THURSDAY	FRIDAY
09:00 - 10:30	16:30 - 17:30	Test Review	Listening Academic	Writing & Research	Grammar Development	Test (Writing)
10:40 - 12:30	17:30 - 18:30	Listening Academic	Writing & Research	Listening Academic	Writing & Research	Test (Reading)
13:10 - 13:55	19:00 - 20:00	Academic Reading	Academic Reading	Academic Reading	Current Affairs	Test (Listening)
14:05 - 15:00	20:00 - 21:00	Tutorial Discussion	Tutorial Discussion	Tutorial Discussion	Seminar Presentation	Test (Speaking)

Learn more about Greenwich English College courses:

greenwichcollege.com.au/course-category/english-language/

English for Business

Course CRICOS Code: 059969M

4, 8 OR 12 WEEK PROGRAM (DAY & EVENING)

"I studied 3 modules of English for Business and also took the Cambridge BULATS exam here at Greenwich. I passed the exam with an Advanced score! Now I have the knowledge and also the internationally recognised qualification which has made my Spanish degree so much more meaningful in Australia."

**ALEJANDRO CALVO
COMORERA,
SPAIN.**

The language of commerce is different to academia and day-to-day English. Students aiming for a career in business within the global environment will benefit from this course greatly.

Study three x 4-week modules on key areas within the business world:

- Administration and Customer Service.
- Sales and Marketing.
- Management and Human Resources.

WHY STUDY ENGLISH FOR BUSINESS?

- Working in small teams will develop skills in cooperation and negotiation, essential for success in the business world.
- Develop professional business presentations.
- Courses often include guest speakers sharing their own business experiences.
- Students can apply business-specific language to real-world business case studies.
- Flexible day or evening courses.
- Suits Intermediate students (IELTS 5.0) or Greenwich Entry Test (at the College or online).

CAMBRIDGE BULATS – BUSINESS LANGUAGE TESTING SERVICE

Greenwich English College is an authorised BULATS testing centre. BULATS provides a set of tools for measuring the language skills of students attending job interviews and aiming for the workplace. It is an internationally recognised benchmarking tool for language ability used in human resources and employment in top companies around the world.

ENGLISH FOR BUSINESS SAMPLE TIMETABLE

DAY	EVENING	MONDAY	TUESDAY	WEDNESDAY	THURSDAY	FRIDAY
09:00 - 10:30	16:30 - 17:30	Lead in Questions	Business Speaking Skills	Business Speaking Skills	Listening & Speaking	Presentation
10:40 - 12:30	17:30 - 18:30	Listening & Vocabulary	Grammar for Business	Listening & Speaking	Grammar Revision	Presentation
13:10 - 13:55	19:00 - 20:00	Business Writing	Reading & Vocabulary	Grammar for Business	Reading & Vocabulary	Presentation
14:05 - 15:00	20:00 - 21:00	Case Study	Case Study	Case Study	Writing Case Study	Presentation

Learn more about Greenwich English College courses:

greenwichcollege.com.au/course-category/english-language/





Pronunciation in Context

Course CRICOS Code: 059969M

4 WEEK PROGRAM (DAY)

“Many students are too focused on Reading and Writing. Understanding what other people are saying, and being understood when you speak, is often more important (and more challenging) than many students plan for.”

ROXANA ENE,
DIRECTOR OF STUDIES.

Making the sounds required by the English language often means learning new ways of using your facial muscles, your breathing and your voice. It also means changing the way you think about language learning!

Fluency in speech is essential to making yourself understood as well as enabling you to integrate well into your new surroundings. Fluency in listening enables you to understand the many sounds of your English-speaking environment: casual conversations, public announcements and television.

WHY STUDY PRONUNCIATION IN CONTEXT?

- Our teachers understand specific linguistic regions and specialise in accent reduction.
- Dynamic approach to improving the core fundamentals of spoken fluency: Phonetics, chunking, rhythm, intonation and pitch.
- One-on-one student counselling on your specific issues.
- Build confidence in fluency through roleplays, group work and weekly presentations.
- Suits Pre-Intermediate students (IELTS 4.0) or Greenwich Entry Test (at the College or online).

Learn more about Greenwich English College courses:

greenwichcollege.com.au/course-category/english-language/

English for TECSOL

Teaching English to Child Speakers of Other Languages (TECSOL)
Course CRICOS Code: 059969M

4 WEEK PROGRAM (DAY)

(+1 week optional kindergarten placement)

A course for those who wish to learn new or upgrade existing skills to teach English at pre-school or primary school.

WHY STUDY ENGLISH FOR TECSOL?

- Develop age-appropriate lessons to teach skills such as songs, games, story telling.
- Make resources for future use in classroom environments.
- Enhance your pronunciation with a focus on phonic English and learn ways to teach it to others.
- Gain practical experience in a one-week placement within an Australian kindergarten or pre-school (optional).
- Enjoy targeted classes and interactive learning.
- Weekly one-on-one counselling and testing feedback.
- Suits Intermediate students (IELTS 5.0) or Greenwich Entry Test (at the College or online).

Learn more about Greenwich English College courses:
greenwichcollege.com.au/course-category/english-language/

“If you want to work with children and have a great learning experience in Australia, I really recommend the Greenwich English College TECSOL course. My English improved and I learned a variety of teaching skills. My lecturer inspired confidence in me and a passion for English. I am excited about the opportunity for an internship to put my new skills into practice.”

CHO RONG LEE,
KOREA.





Ready for Work (RSA Certificate)

Provide Responsible Service of Alcohol - Course Code: SITHFAB009A

1 DAY PROGRAM (FACE TO FACE & ONLINE)

One of the best ways to earn extra money, to practice your language and to build your confidence is to work in the hospitality industry in one of Sydney's many bars, clubs or restaurants.

By law you must be over 18, having completed a Responsible Service of Alcohol (RSA) course, to be employed in this industry. A bonus of study at Greenwich English College is the opportunity to achieve your RSA certificate, face-to-face or online.

WHY STUDY RSA?

- Receive a Statement of Attainment of the RSA qualification.
- Increase your opportunities for employment.
- Learn about important aspects of health, the law and the police.
- Meet new people through work and social connections.
- Course delivered face to face at Greenwich English College or available online.

Learn more about Greenwich English College courses:

greenwichcollege.com.au/course-category/rsa-course/

Accreditations & Associations

NEAS

National ELT Accreditation Scheme.

- NEAS accreditation ensures that the college meets national quality standards.
- Professionally qualified English teachers.
- Approved curriculum.
- Monitored accommodation service
- Education and Welfare counselling.

ASQA

Australian Skills Quality Authority.

- ASQA is the recognition and registering authority in Australia for all RTOs that issue Australian Qualifications Framework (AQF) qualifications and statements of attainment.
- Quality assured and nationally recognised training and qualifications.
- Approved to provide courses to overseas students studying in Australia and listed on the Commonwealth Register of Institutions and Courses for Overseas Students (CRICOS).

AQTF

Australian Quality Training Framework.

The AQTF is the national set of standards which assures nationally consistent, high quality vocational training and assessments in Australia.

RPL

Recognition of Prior Learning.

RPL assesses a person's skills and knowledge they have achieved through informal education and training, as well as course credit for previous formal education and training. RPL is only available for Australian Qualifications Framework (AQF) awards. Contact us for more information on how to apply.

ENGLISH AUSTRALIA

Greenwich English College is a member of English Australia, the national peak body for the English language sector of international education in Australia. Member colleges must meet strict entry criteria and commit to upholding English Australia values, adhering to the code of conduct and a commitment to ongoing best practice.

FLA

Flexible Learning & Assessment.

Greenwich English College programs have flexible delivery methods and we ensure assessments are fair and equitable. We vary our learning methods as well as provide flexible assessments to meet individual special learning needs. The important focus is placed on the student achieving the required learning outcomes, competencies, and/or the standards rather than the method itself.

CELA

University of Cambridge English Language Assessments.

Greenwich English College is an authorised University of Cambridge Computer Based Testing (CBT) Centre.

BULATS

Business Language Testing Service.

Greenwich English College is an official University of Cambridge BULATS Testing Centre.



RedHill Education Group

Greenwich English College is a proud member of the RedHill Education Group.

A student who chooses to study at a RedHill Education college makes a considerable investment in his or her future. In return, RedHill treats its students as valued customers and commits to delivering an effective, relevant, high quality and inspiring educational experience for the long term.

Learn more about RedHill Education Group:
redhilleducation.com

NO TWO DREAMS ARE THE SAME

“I took a pathway to a Sydney University Masters degree from Greenwich English College and AIT. I loved studying English at Greenwich - I believe it is the best place to start learning English.”

YOKO TOMISHIMA / JAPAN.

Greenwich English College and AIT graduate,
now studying at Sydney University.

YOUR FUTURE

With Greenwich English College beside you as a partner, your future looks bright, wherever you decide to head next. You will look back on the skills, concepts and relationships you develop at Greenwich and say, “That was one of the best times of my life!”





GREENWICH
English College

Greenwich English College Pty Ltd

ABN 31 114 584 940

Provider CRICOS Code 02672K

Level 2, 396 Pitt Street
Sydney NSW 2000 Australia
(Entry via Goulburn Street)

t + 61 2 9264 2223

f + 61 2 9264 2224

e info@greenwichcollege.com.au

A proud member of the RedHill Education Group

© 2013 Greenwich English College Pty Ltd

www.greenwichcollege.com.au

